



AGRICULTURAL LAND AND
PROJECTS/PROGRAMME/SUPPORT PROFILE

LEJWELEPUTSWA PROFILE

1. LEJWELEPUTSWA DISTRICT MUNICIPALITY

The Lejweleputswa District Municipality covers an area of 3 193 028 ha and its population is estimated at about 657 952.

Table 1: Area size and population

Name	Code	Seat	Area (km ²)	Population (2007)	Pop. Density (per km ²)
Lejweleputswa District Municipality	DC18	Welkom	31,930	657,952	20.0

It is comprised of five local municipalities in its jurisdiction, namely:

- Masilonyana Local Municipality
- Tokologo Local Municipality
- Tswelopele Local municipality
- Matjhabeng Local Municipality
- Nala Local Municipality

The following sectoral contribution to the district economy should be noted: ± 98% of mining takes place in Matjhabeng and Masilonyana and ± 65% of agricultural output in the District comes from Tswelopele and Nala.

2. AGRICULTURAL POTENTIAL

This district is an important agricultural area for the Free State. The district is predominantly known for its maize production and Bothaville is considered one of the most important maize centres in South Africa, and also forms part of the Free State Maize Route. The annual NAMPO Harvest Day attracts more than 20 000 visitors and is the second largest private agricultural show centre in the world. The district is also known for its progressive poultry and piggery projects. The district is mostly covered by non-arable, moderate potential grazing land as well as marginal potential arable land. The high water table in the north-western part of the district makes it very suitable for maize production and should remain an important maize producing area. Tables 2 & 3, below provide a summary of main agricultural products and the production in the province.

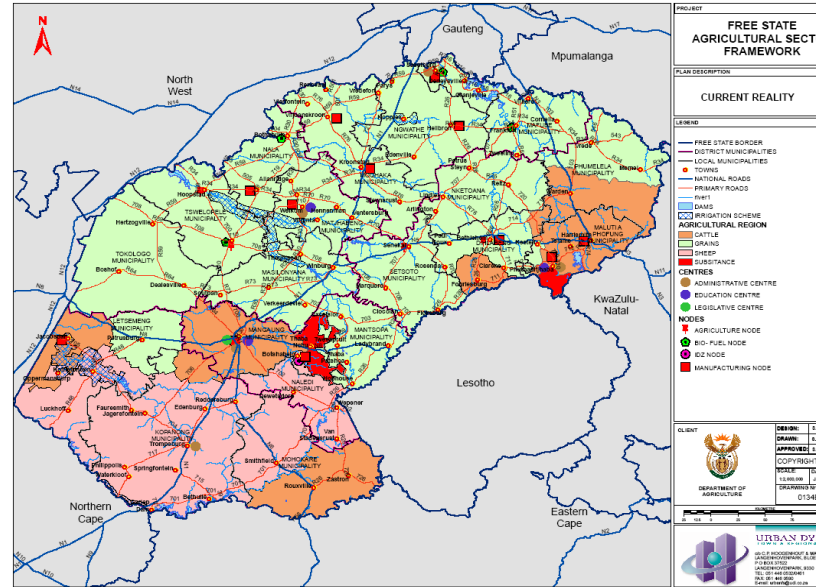
Table 2: Summary of main agricultural products

Feature	Lejweleputswa (DC18) (Partly Rural)
% contribution to Free State GVA	21%
% contribution of agriculture to district GVA	10%
Main agricultural products	Maize, Sunflower, Wheat, Poultry Hub, Vegetables, Game, Groundnuts

Source: Agro-Industry Hub Development Framework 2007 (FSDA)

Table 3: Agricultural production in the Free State

Commodity	Production (tons)	Contribution to total RSA production (%)	Main areas
Maize	3 336 500	36	DC 18, DC 19, DC 20
Wheat	445 000	32	DC 16, DC 19
Sorghum	126 050	57	DC 17, DC20
Potatoes	462 990	33	DC 19, DC 16
Sunflower	330 500	51	DC 18, DC 19, DC 20
Red meat	144 918	18	DC 16, DC 17, DC 18, DC 19, DC20
Vegetables	124 980	6	DC 16, DC 17, DC 18
Dry beans	15 700	26	DC 19
Fruits	23 000	4	DC 19
Peanuts	11 664	38	DC 16, DC 18, DC 20
Wool		24	DC 16, DC 17, DC 19
Dairy		18	DC 18, DC 20, DC 19



Source: Agro-Industry Hub Development Framework 2007 (FSDA)

Map 1 clearly indicates how widespread agricultural activities are in the province.

LEJWELEPU

Table 4: Summary of Regional Thrusts and Opportunities

DISTRICT MUNICIPALITY	CORRIDOR	FOCUS AREA	TARGETED GROUP	COMMODITY TYPE	OPPORTUNITIES
Lejweleputswa (Partly Rural)	N 1	Welkom, Henneman, Sand-vet Irrigation scheme, Winburg, Ventersburg Bothaville, Hoopstad, Wesselsbron, Boshof	Susistance, Smallholder and Commercial farmers Farm dwellers	<ul style="list-style-type: none"> ➤ Maize, Sunflower, Wheat, potatoes, Vegetables ➤ Poultry Hub, Piggery, Livestock, ➤ Game farming 	<ul style="list-style-type: none"> ➤ Regional poultry abattoir, Regional feeds manufacturing plant, Bio-fuel plant, Irrigation schemes and hydroponics, and Market Infrastructure Development.

3. PROJECTS ANALYSIS AND LAND INVENTORY SUMMARY

Table 5: Projects analysis and land inventory summary report.

Description	LEJWELEPUTSWA
Number of projects	65
Number of projects: Inventory	63
Commodities	
Grains	7
Beans	0
Sunflower	0
Lucerne	0
Grasses	0



Vegetables	12
Beef Cattle	17
Dairy Cattle / Dairy	3
Small Livestock	12
Pigs	3
Poultry	8
Agroprocessing	5
Other	3
Status of projects:	
No. of successful projects	47
No. of struggling projects	18
Total budget spend/allocated	R 36,712,431
Total project hectares	9070.47
Private	5
LRAD	21
Restitution	1
Commonage/Communal	24
School	1
General reasons for struggling projects	Some of the major causes of struggling projects are linked to group dynamics, lack of commitment and lack of financial management while issues such as theft, marketing, debt and contractors not delivering also contributed.
General reasons for success	The reason for success was indicated as increased production capacity.